



article 1303S sospensione/ pendant light

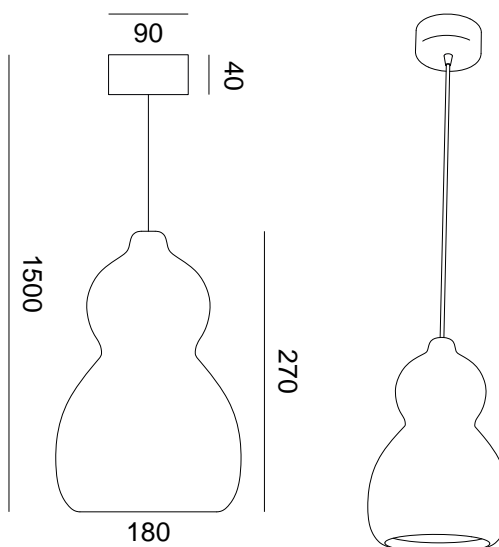
Questa serie di sospensioni è tornito a mano in terracotta da abili artigiani, seguendo attentamente i disegni di Philip Platino. Ogni pezzo, nonostante la sua semplicità, è come una nota musicale che, in contrapposizione con le altre forme, crea un accordo armonioso di infinite sfumature e tonalità. Dopo essere stato tornito a mano, ogni pezzo viene modellato con uno strumento manuale per affinarne la forma ed esaltarne la texture. Una volta cotto, viene decorato con pigmenti speciali della nostra gamma di colori per esterni.

This series of suspension lights is hand thrown in terracotta by able artisans, carefully following the designs of Philip Platino. Each piece though simple in its silhouette is as a note of music which, in juxtaposition with the other form, creates a chord of sound in infinite hues and tones. After being hand thrown, each piece is then modelled with a handtool to refine the form and bring out the texture of the clay. Once fired it is then decorated with special pigments in our range of outdoor colours.



specifiche tecniche/ Technical data

- **tipologia/ type**
sospensione/ pendant
- **ambiente/ environment**
indoor
- **Certificazione/ certification**
EN CE   IP20
- **volume**
0,09 m3
- **peso netto/ nett wight**
2,5kg
- **tensione/ voltage**
230v
- **fonte luminosa/ light source**
E27 max 15w
- **materiali/ materials**
Terra rossa galestro
Galestro red clay



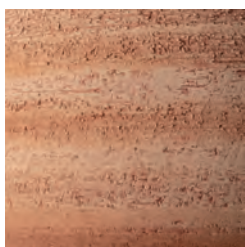
note: Each piece is individually crafted and the dimensions are indicative
nota: ogni pezzo è prodotto manualmente e le dimensioni sono indicative

scheda colori/ colour sheet

available chart 4



GN



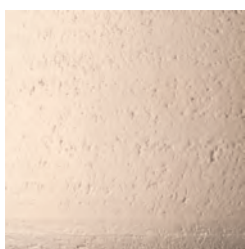
GS



SD



Pr grigio



RB



BP